



2003-2007 Ford 6.0L Powerstroke Fuel Filter/Water Separator Installation Instructions

PLEASE READ INSTRUCTIONS IN THEIR ENTIRETY BEFORE BEGINNING THE INSTALL

SEE FIGURE 1: Locate the fuel pump on the **inside** of the driver's side frame rail. The lower line on the rear of the pump is the incoming fuel line from the tank. This is the line you'll make connections to. Disconnect the quick connect fitting from the incoming fuel line by simply pushing in on the blue tab while you pull the fitting loose from the pump.

SEE FIGURE 2: Fully pull the black lock clip on the female DIESELSITE CNC fitting out as far as it will come without removing it from the fitting. Next, push the female CNC quick connect fitting onto the open steel fuel nipple now exposed as far as it will go. Once completely in place, push the black lock clip in on the female CNC fitting to secure the connection. Be sure the quick connect fitting is fully engaged and secure. You can do this by pulling on the fitting to make sure it does not come loose from the steel fuel nipple.

SEE FIGURE 3: Find the OEM quick connect you disconnected from the steel fuel nipple and push it onto the Dieselsite male CNC quick connect. You will simply push the two together until you hear a distinct "snap" from the OEM blue lock tab engaging. Using the supplied zip tie secure the incoming fuel line to existing wiring as shown.

SEE FIGURE 4: You will be mounting the DIESELSITE fuel filter / water separator assembly on the **outside** of the frame rail. Find a location on the outside of the frame rail opposite the stock fuel pump and toward the rear of the truck where you find a clear space. You will need to drill two mounting holes for the filter housing to bolt to the frame. Quite often, you can find at least one predrilled hole in the frame to use. Mark and drill 3/8" hole(s) and bolt the filter housing to the frame using the supplied stainless steel bolts and washers. Use a drop of threadlocker on each of the bolts before installing. **FIGURE 5** shows the fender washers we supply allowing you to choose oval holes found in the frame if you wish to use them.

SEE FIGURE 6: Using one of the supplied stainless steel hose clamps, connect one end of the supplied fuel hose to the brass barb on the female quick connect fitting. Route this hose to the fuel filter/water separator assembly and cut to length. Connect your line to the port closest to the frame on the filter assembly and secure with a supplied hose clamp.

SEE FIGURE 7: Route the remaining section of hose from the brass barb on the DIESELSITE male CNC fitting to the middle port on the fuel filter assembly. Secure the hose using the supplied hose clamps.

Next you will make sure all connections are tight and secure.

SEE FIGURE 8: Check the fuel bowl and hand tighten if necessary. Never overtighten the fuel bowl. There are no tools required when changing filters. Always hand tighten only. Check the two brass flare nuts in the ports of the filter assembly for tightness. A snug fit using an 11/16" open end wrench should be all that is needed. No teflon tape or threadlocker is needed on flare fittings. **DO NOT USE TEFLON TAPE OR THREADLOCKER!**

Double check all connections you made during the install and those listed above before continuing. The brass barsbs installed into the DIESELSITE quick connect fittings have already been tightened and sealed with threadlocker during assembly before shipping for your convenience. **Do not adjust or tighten these barbs.**

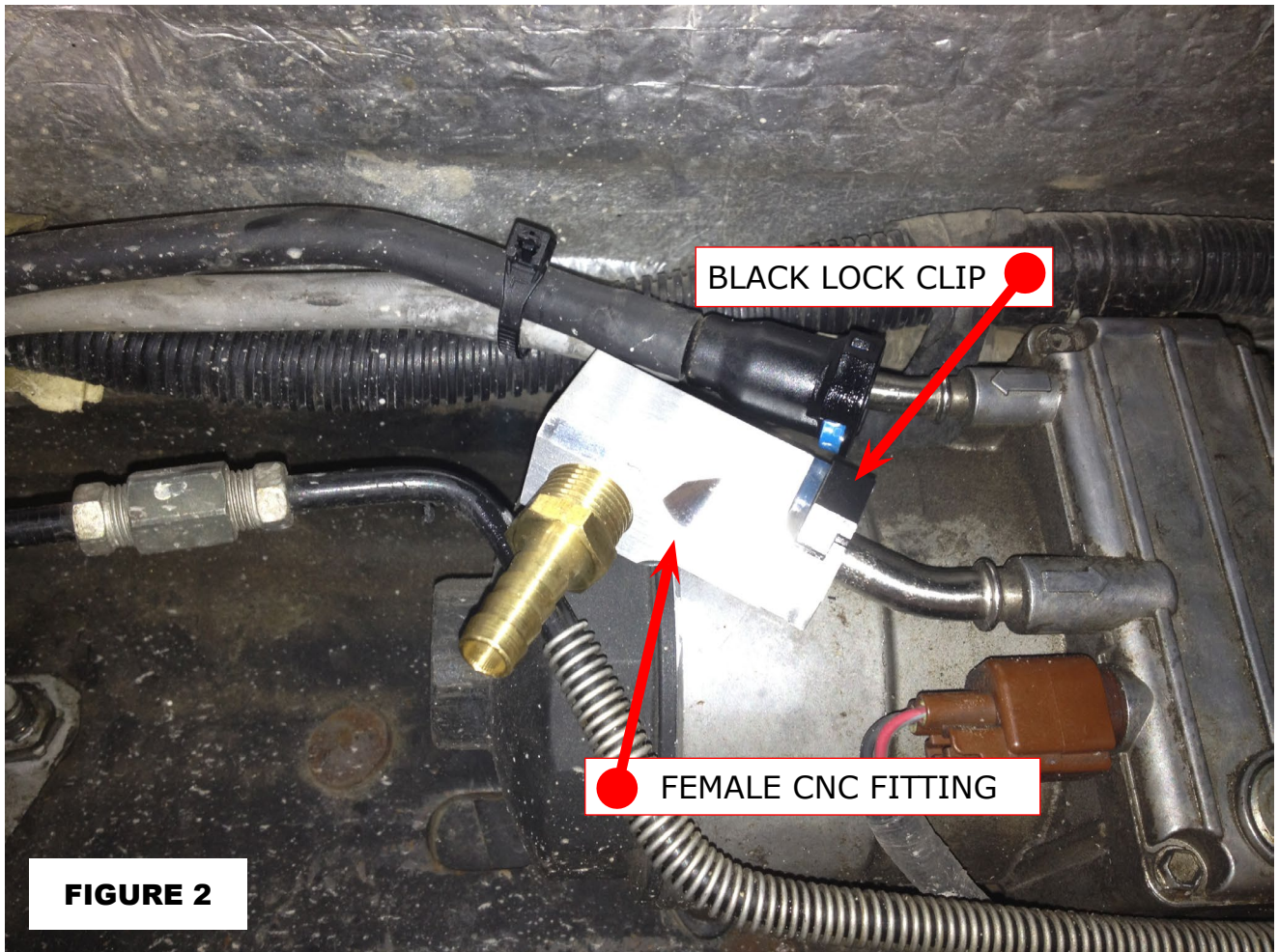
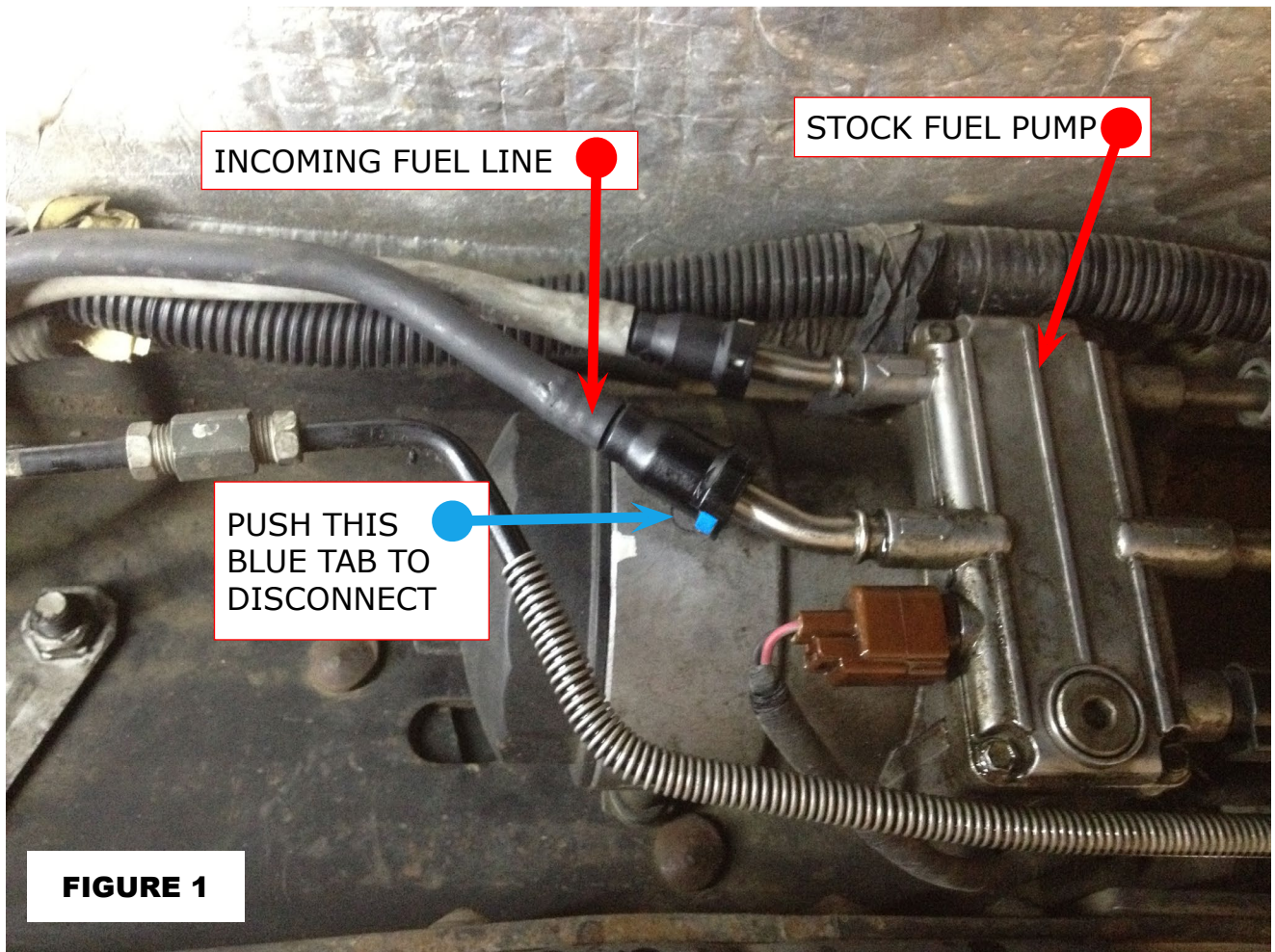
TO COMPLETE INSTALLATION:

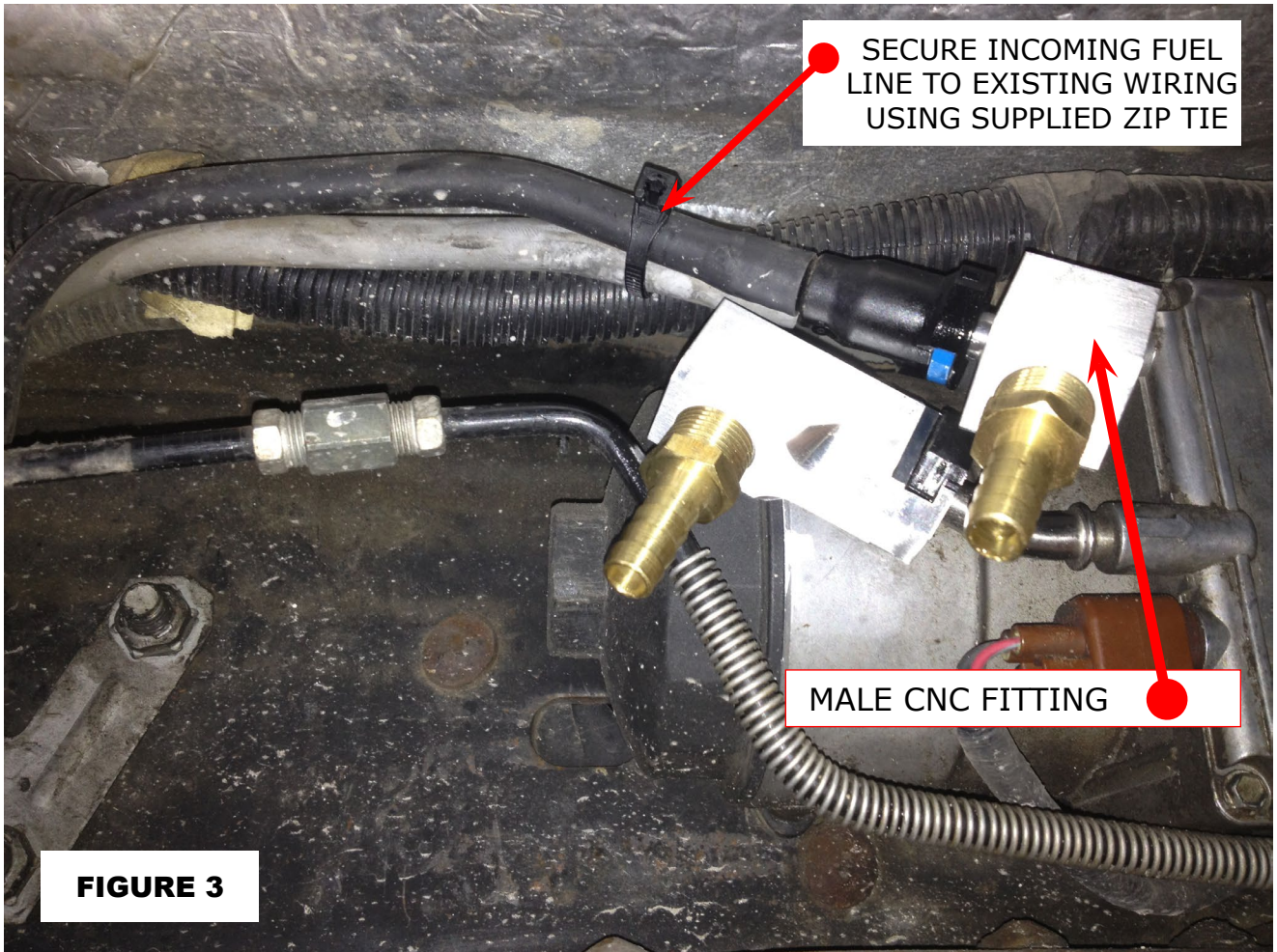
If you have made sure fuel bowl is hand tight, you can now turn the ignition key to the "on" position, but **do not start the engine**. This will start the fuel pump. Let the pump run to fill the fuel filter bowl. The fuel pump will only run for about 30 seconds. You may have to turn off the ignition and back on to re-energize the pump. This may take several cycles to clear the air from the system. Check for leaks during this process.

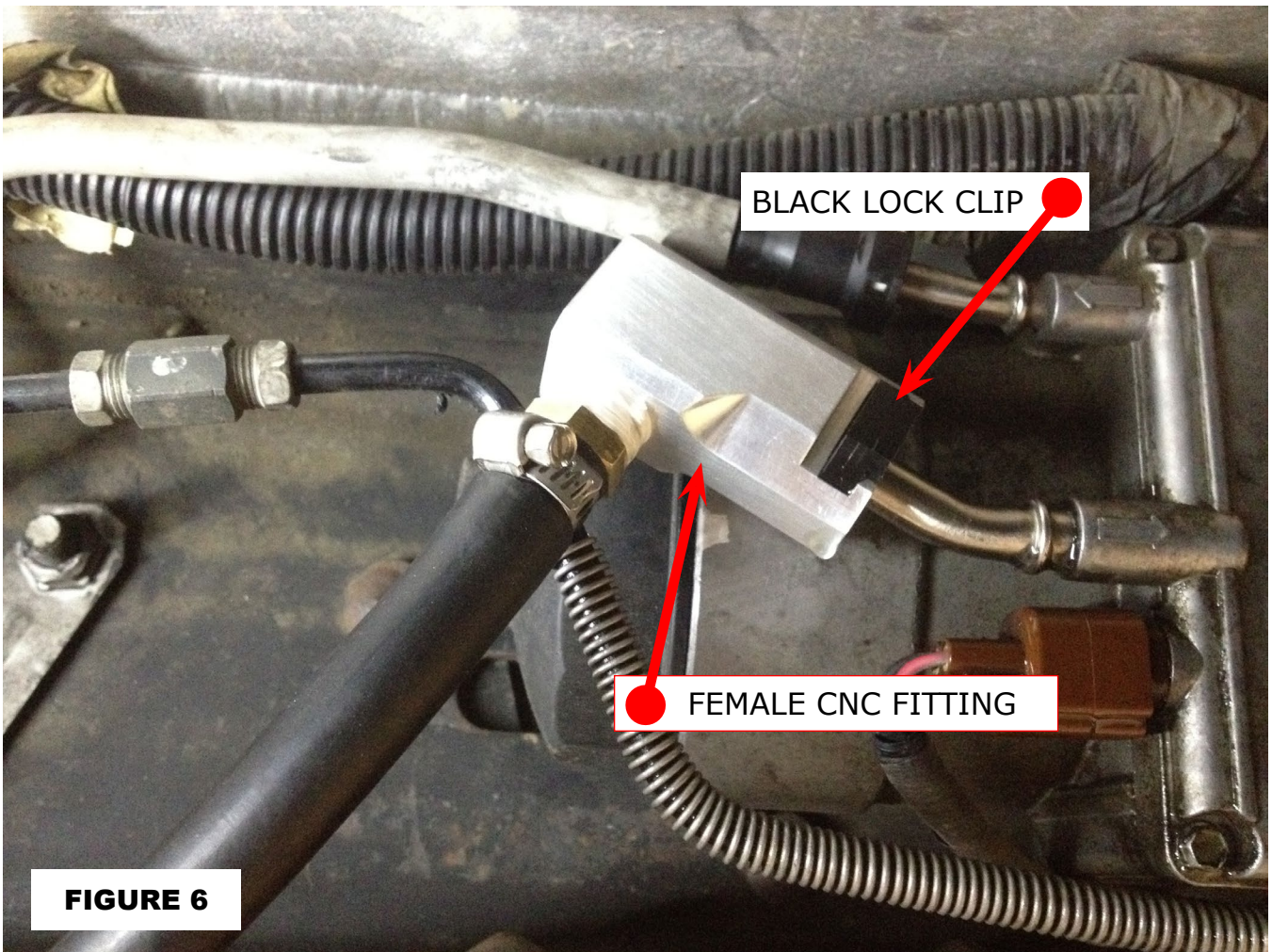
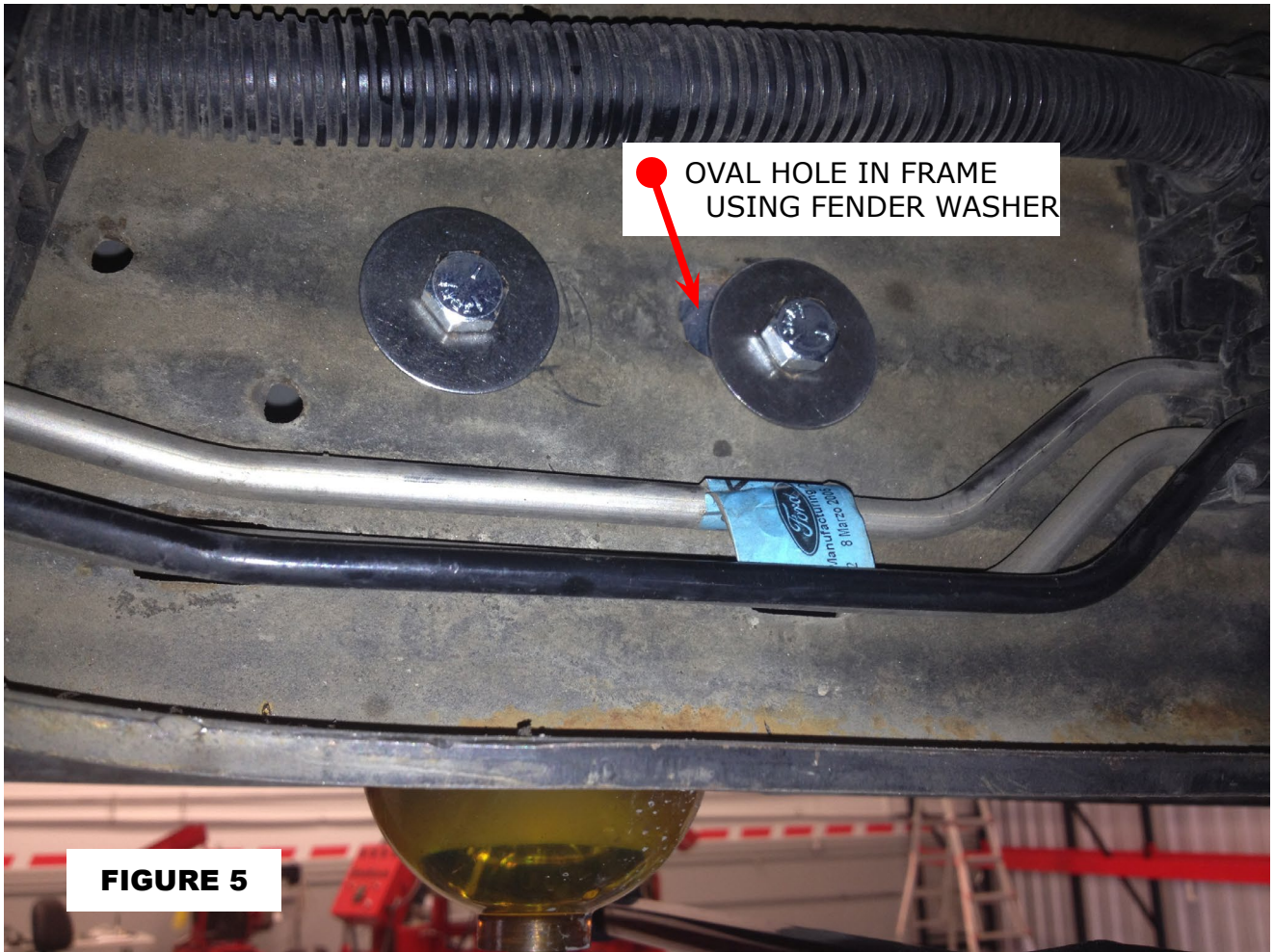
After filling bowl with fuel, start your engine and check for leaks. Installation is now complete!

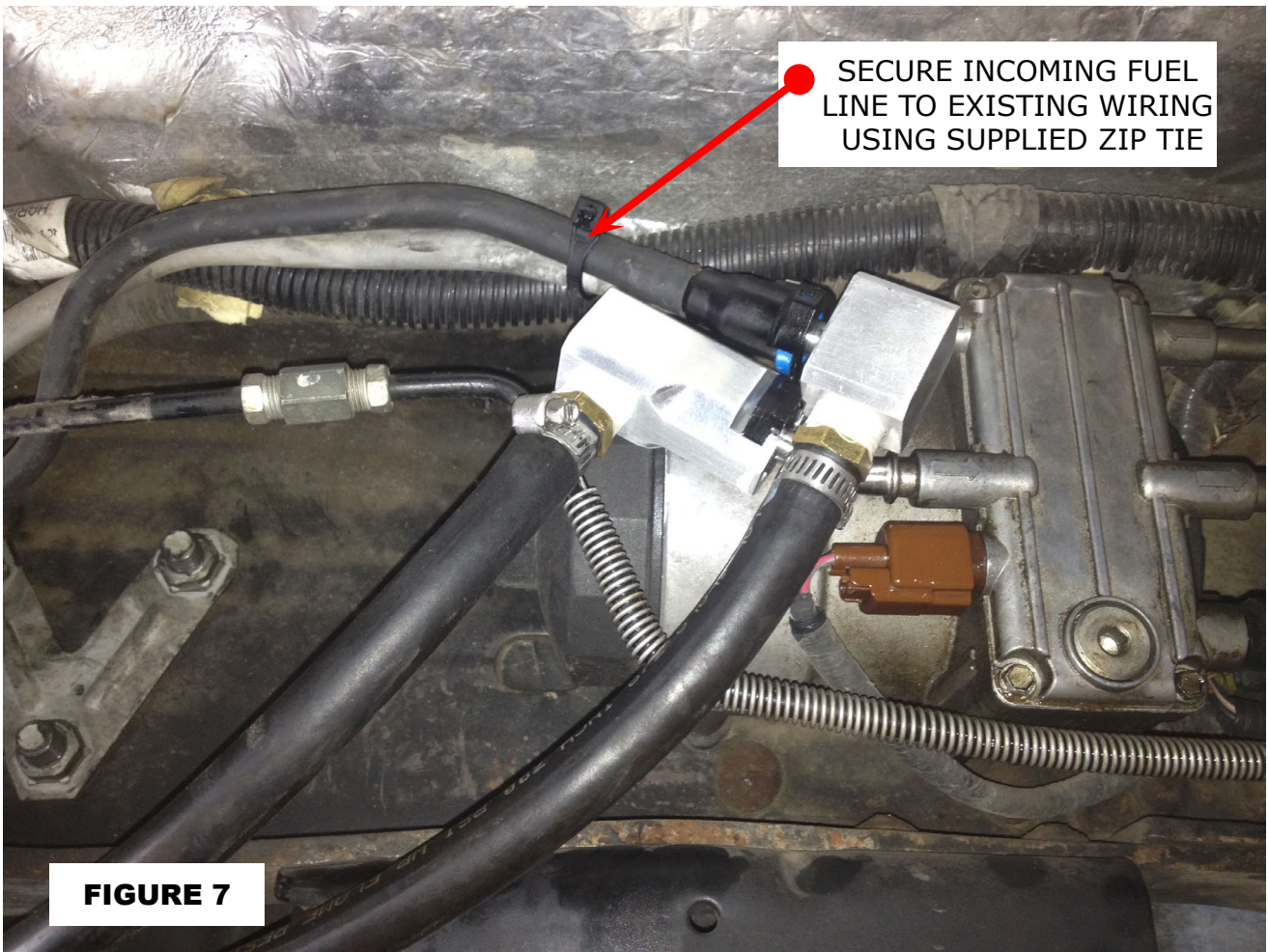
MAINTENANCE: Change your filters every 10,000 miles and check for water often. Drain water from bowl when present. Water in your bowl can become frozen in cold climates.

TECHNICAL SUPPORT 888-414-3457



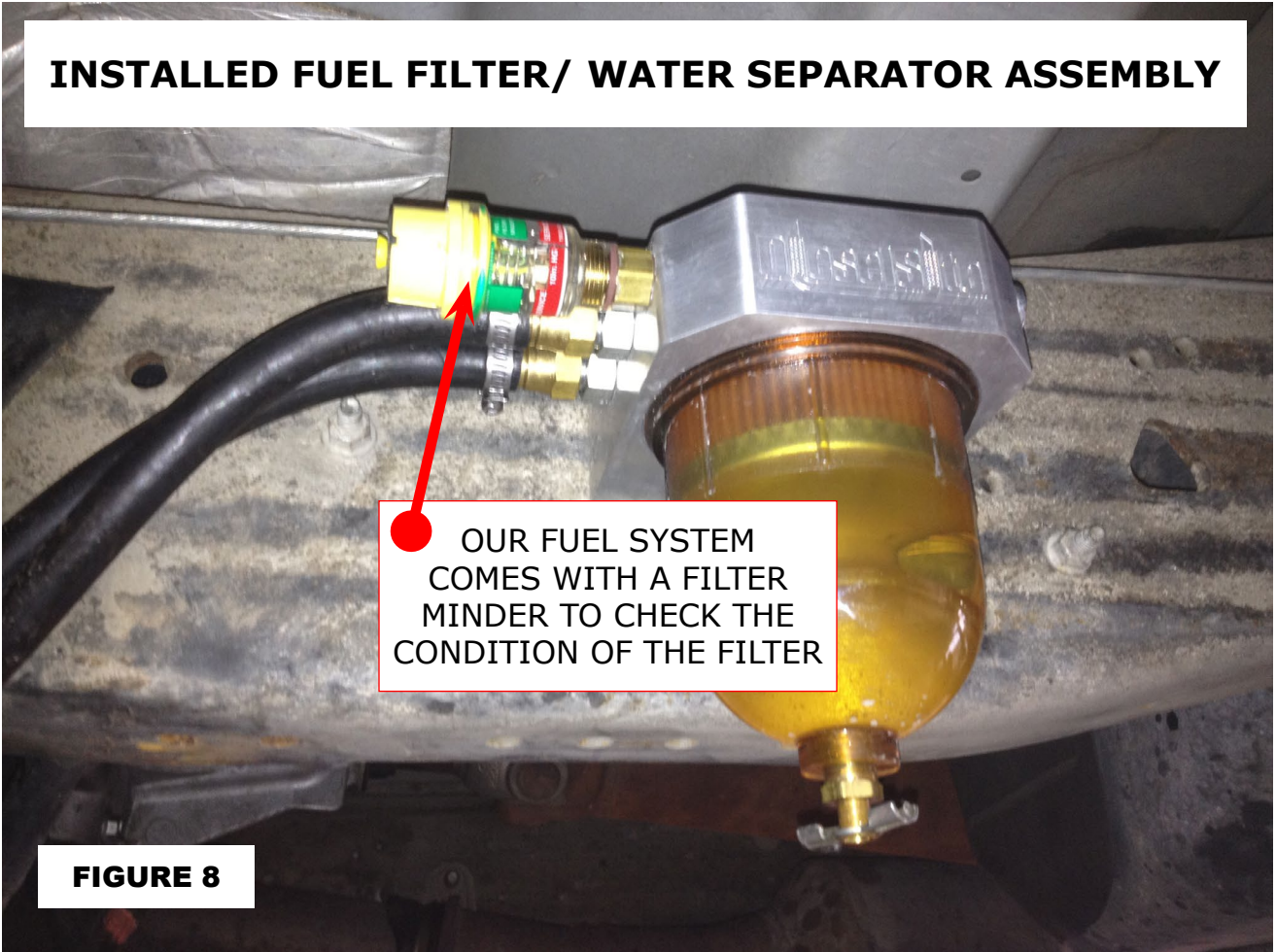






● SECURE INCOMING FUEL LINE TO EXISTING WIRING USING SUPPLIED ZIP TIE

FIGURE 7



INSTALLED FUEL FILTER/ WATER SEPARATOR ASSEMBLY

● OUR FUEL SYSTEM COMES WITH A FILTER MINDER TO CHECK THE CONDITION OF THE FILTER

FIGURE 8